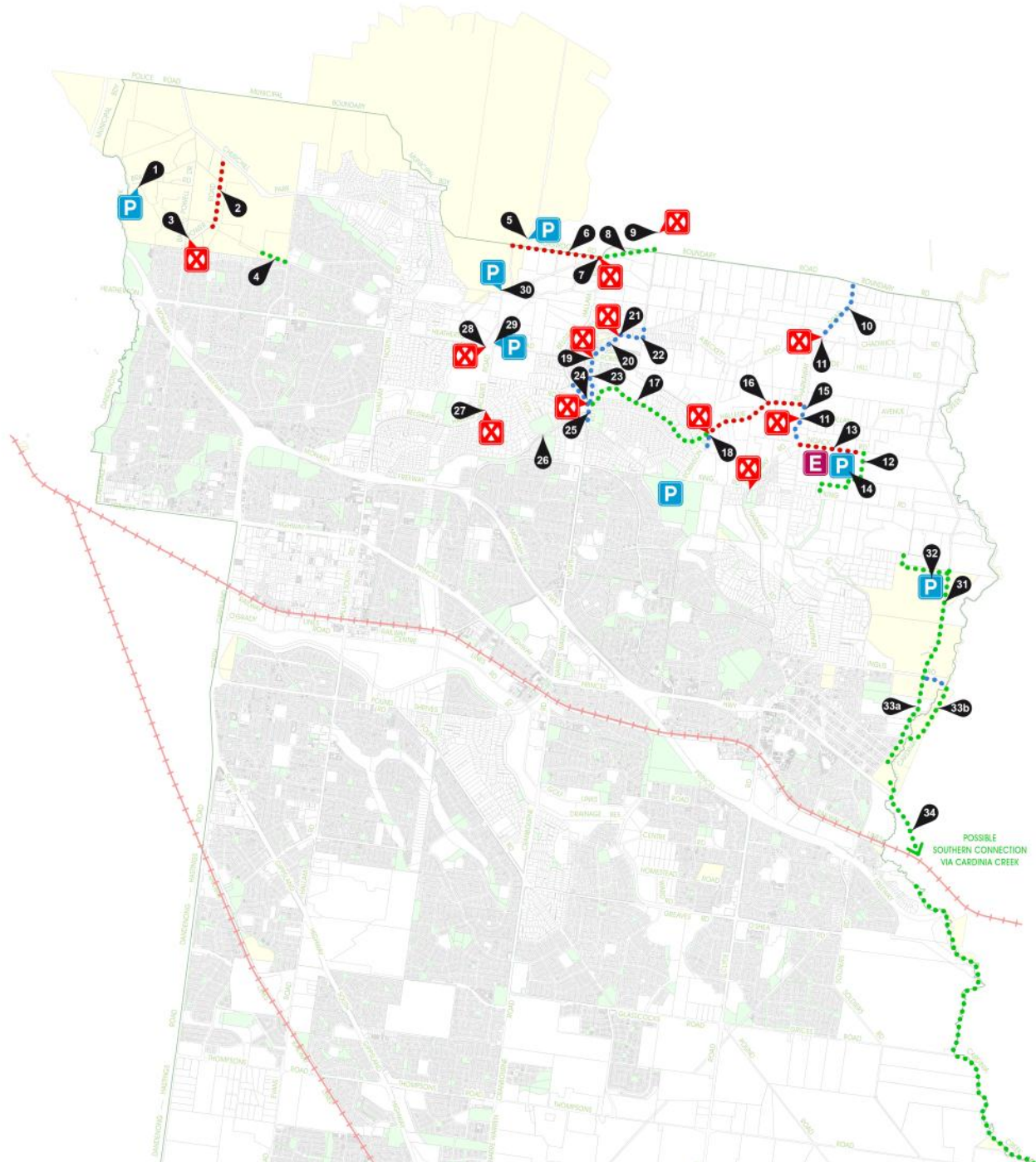









PROPOSED TRAIL NETWORK NORTH



LEGEND

-  ROAD AND PROPERTY BOUNDARIES
-  CITY OF CASEY OWNERSHIP
-  CROWN LAND TENURE
-  MUNICIPAL BOUNDARY
-  METROPOLITAN RAIL LINE
-  DISUSED RAIL LINE
-  EXISTING TRAILS MARKER
-  PROPOSED PROJECT MARKER

EQUESTRIAN ACTIVITIES

-  ON ROAD EQUESTRIAN ROUTE
-  POSSIBLE ON ROAD EQUESTRIAN ROUTE
-  OFF ROAD TRAILS O/S
-  POTENTIAL OFF ROAD TRAILS O/S
-  ROADSIDE TRAILS UNCONSTRUCTED
-  POSSIBLE UNCONSTRUCTED ROADSIDE TRAILS
-  ROADSIDE TRAILS CONSTRUCTED
-  POSSIBLE CONSTRUCTED ROADSIDE TRAILS

EQUESTRIAN FACILITIES

-  POTENTIAL EQUESTRIAN FACILITY
-  CRANBOURNE RACECOURSE AND TRAINING
-  HORSE AND PONY CLUBS
-  CAR PARKING (FLOATS)
-  PROPOSED CAR PARKING (FLOATS)
-  PRIVATE EQUESTRIAN CENTRES
-  SCHOOL WITH EQUESTRIAN FACILITIES
-  PROPOSED ROAD CROSSING

POSSIBLE SOUTHERN CONNECTION VIA CARDINA CREEK