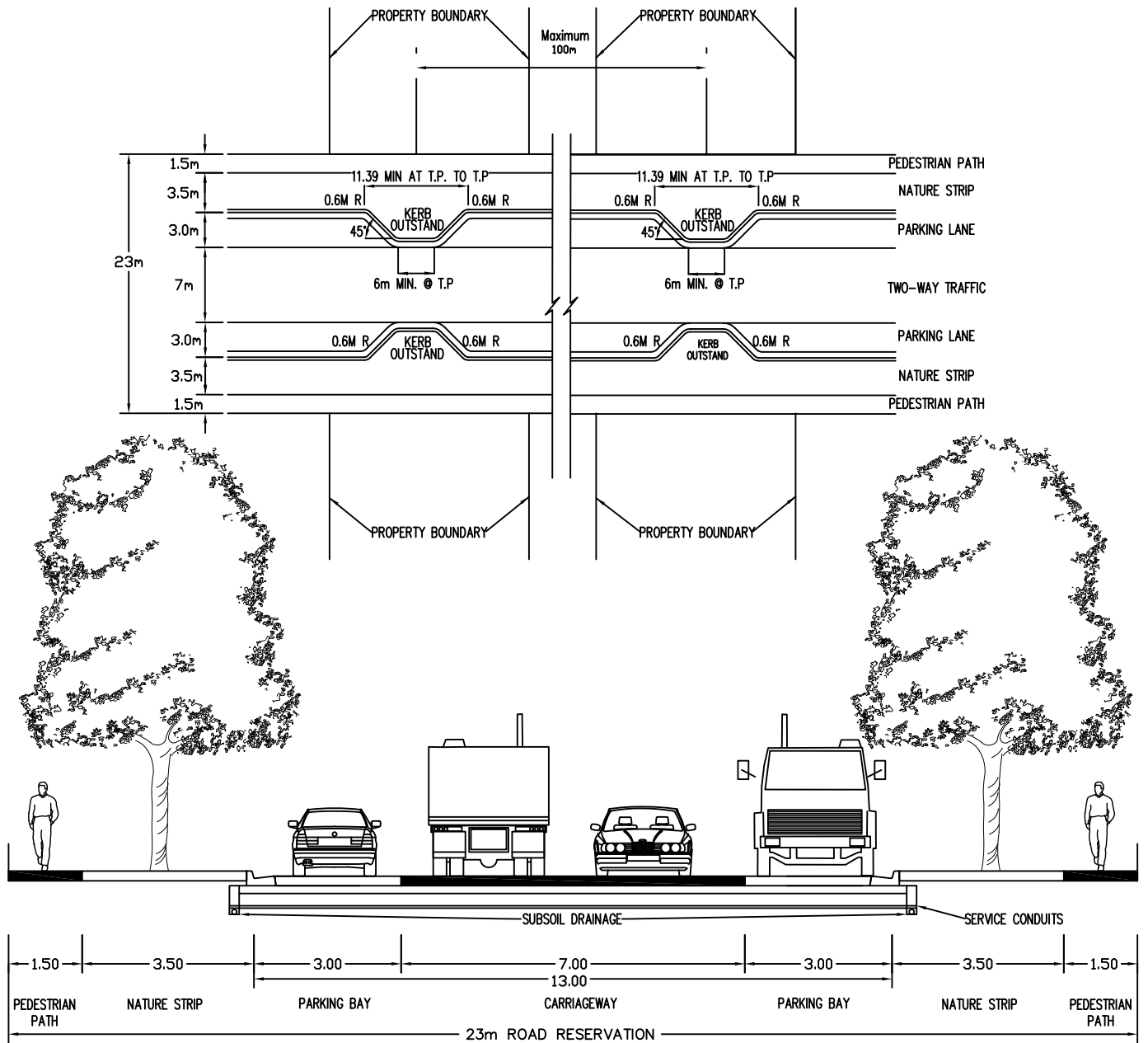


**SECTION 1**

**STREET CROSS  
SECTIONS**

KERB OUTSTAND DETAIL



NOTES

1. MAXIMUM VEHICLE VOLUME UP TO 1000 VPD.
2. KERB AND CHANNEL TO BE BARRIER KERB
3. REFER TO CODE OF PRACTICE FOR COORDINATION OF STREET WORKS, VICTORIA FOR SERVICE LOCATION.

# CITY OF CASEY

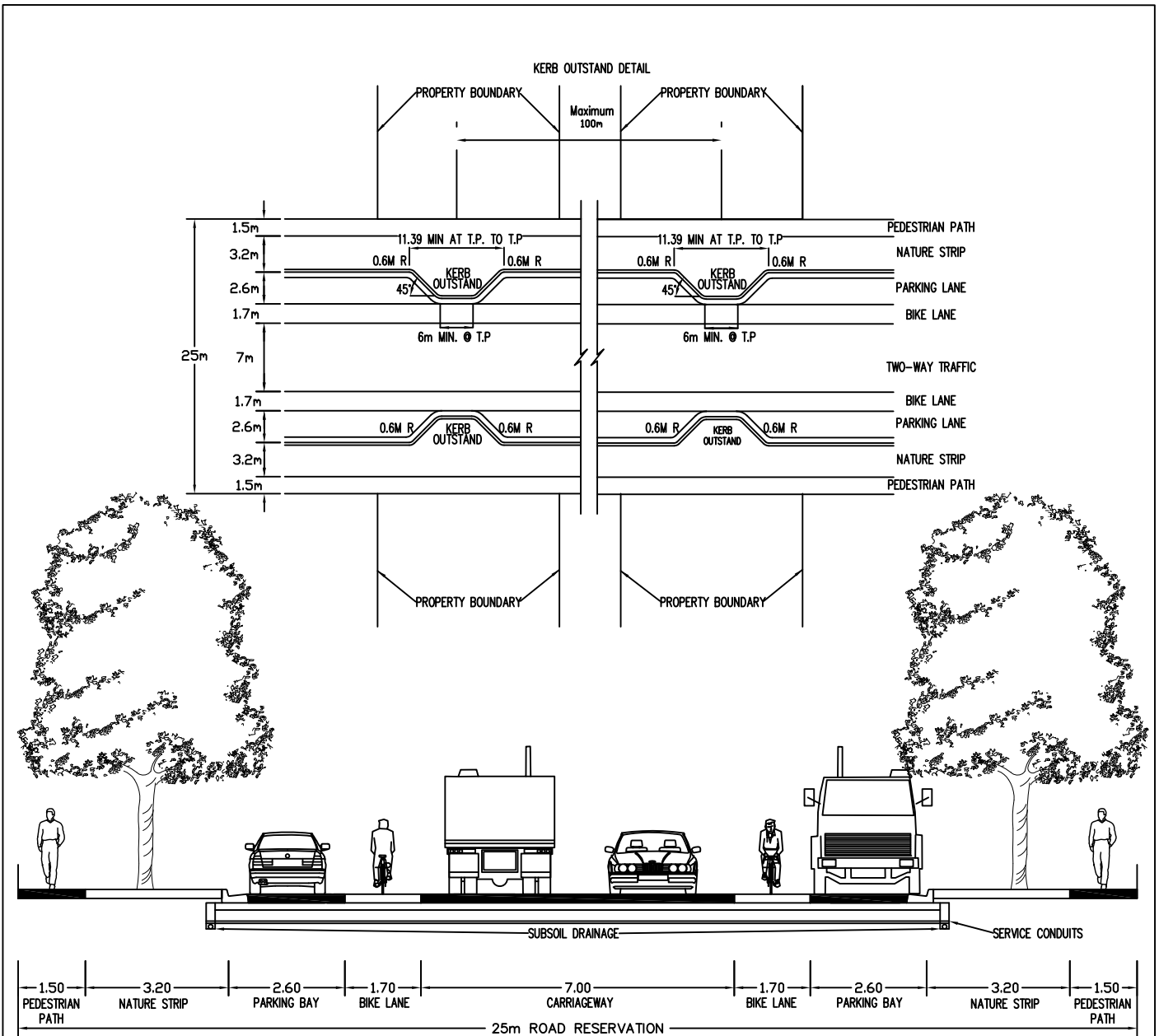
INDUSTRIAL LOCAL – 23m  
TYPICAL GEOMETRIC CROSS SECTION

MANAGER OF ENGINEERING & ENVIRONMENTAL SERVICES  
LAST UPDATE 09.11.2012

AMENDMENTS: CROSS SECTION DIMENSIONS UPDATED

S-101

V4



NOTES

1. MINIMUM VEHICLE VOLUME 1000 VPD.
2. KERB AND CHANNEL TO BE BARRIER KERB
3. REFER TO CODE OF PRACTICE FOR COORDINATION OF STREET WORKS, VICTORIA FOR SERVICE LOCATION.

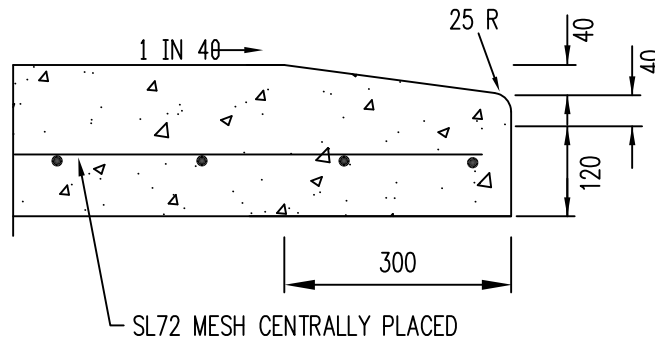
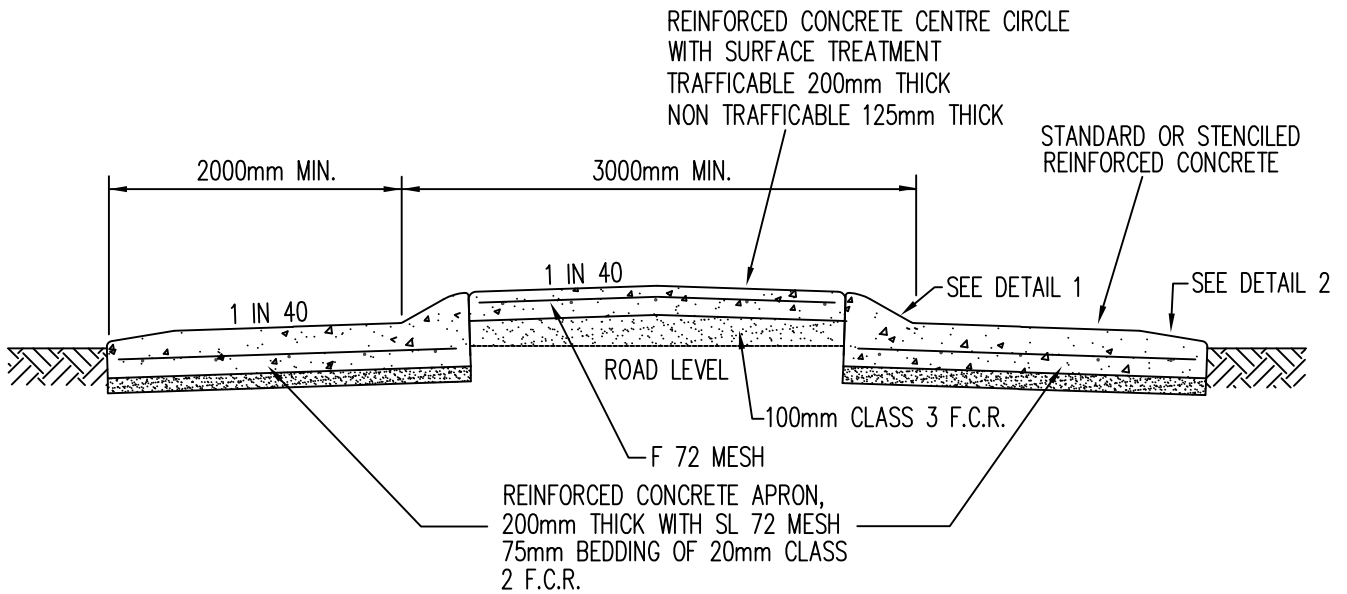
**CITY OF CASEY**

INDUSTRIAL CONNECTOR - 25m  
TYPICAL GEOMETRIC CROSS SECTION

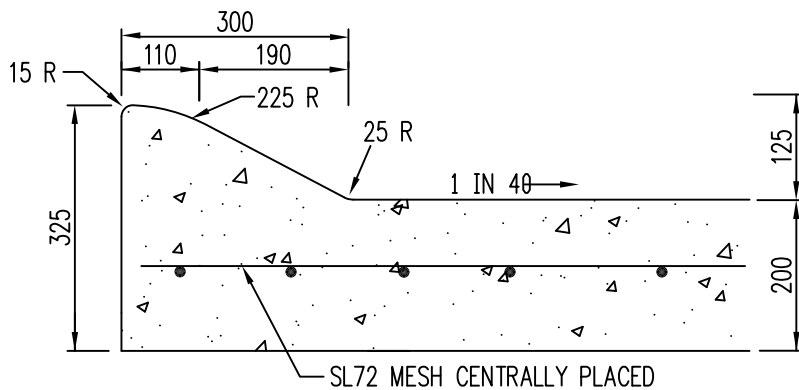
MANAGER OF ENGINEERING &  
ENVIRONMENTAL SERVICES  
LAST UPDATE 09.11.2012

S-101A

V2



DETAIL 2



DETAIL 1

NOTES:

1. MINIMUM REINFORCING COVER 100mm.
2. CONCRETE STRENGTH OF F'C = 25 MPa
3. CONCRETE STRENGTH OF F'C = 30 MPa IF COLOURED CONCRETE IS USED

**CITY OF CASEY**

ROUNDABOUT CENTRAL ISLAND GENERAL

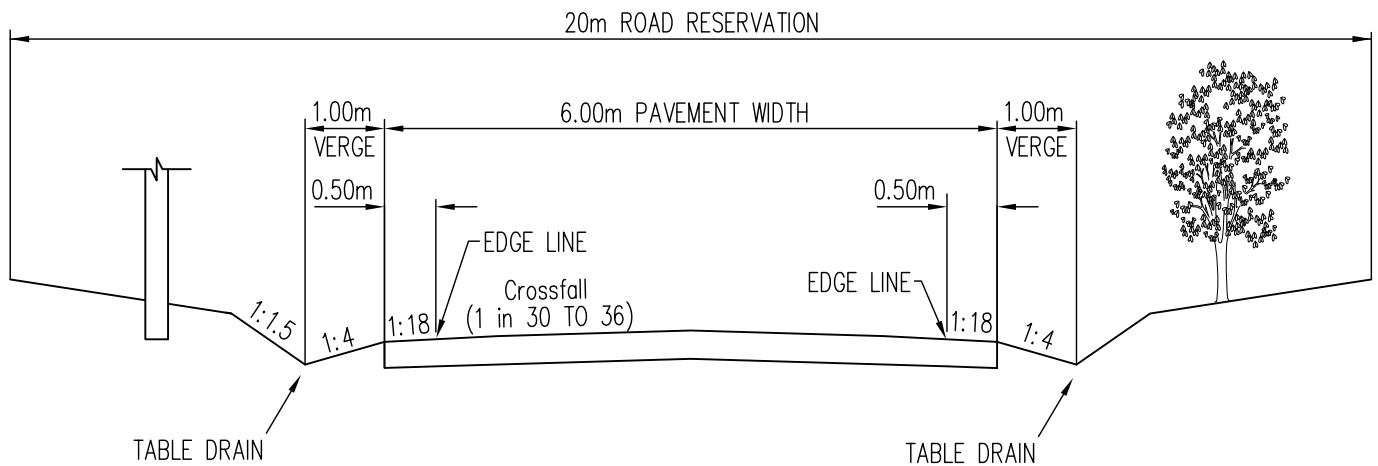
AMENDMENTS: GENERAL UPGRADE

MANAGER OF ENGINEERING & ENVIRONMENTAL SERVICES

LAST UPDATE 09.11.2012

S-103

V2



TYPICAL CROSS SECTION FOR LOW SPEED RURAL ROADS  
(LOCAL ACCESS, RURAL/RESIDENTIAL)

NOTES

TYPICAL PARAMETERS FOR LOWSPEED RURAL ROADS

1. LOW TRAFFIC VOLUMES (< 500 VEHICLES PER DAY)
2. NO THROUGH ROADS
3. LOW SPEEDS (OPERATING SPEEDS UP TO 50km/h)
4. NO CENTRELINES OR RRPM'S
5. NO GUIDE POSTS
6. CLEAR ZONE AS PER AUSTRROADS GUILDLINES
7. DRAINAGE

**CITY OF CASEY**

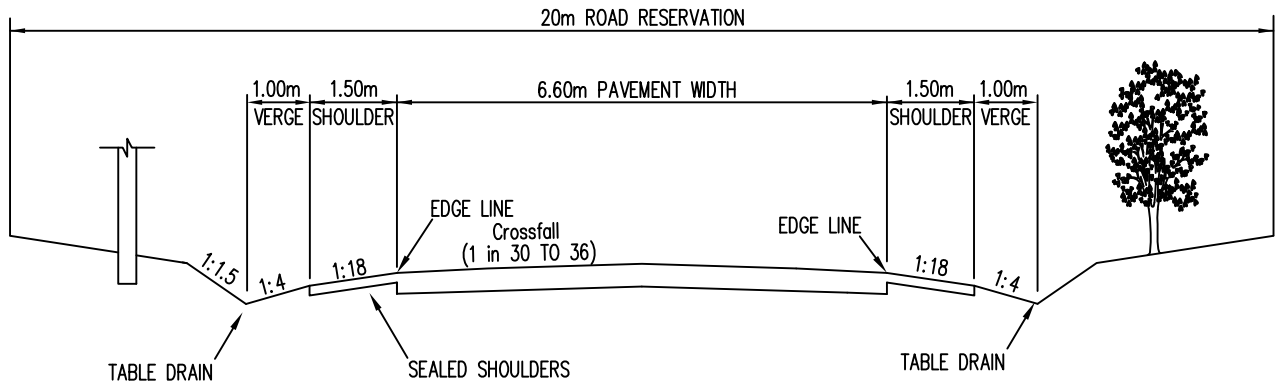
LOW SPEED – RURAL ROADS  
TYPICAL GEOMETRIC CROSS SECTIONS

AMENDMENTS: GENERAL UPGRADE

MANAGER OF ENGINEERING &  
ENVIRONMENTAL SERVICES  
LAST UPDATE 09.11.2012

S-111

V1



TYPICAL CROSS SECTION FOR HIGH SPEED RURAL ROADS  
(COLLECTOR)

NOTES

- TYPICAL PARAMETERS FOR HIGH SPEED RURAL ROADS
1. TRAFFIC VOLUMES (OVER 1000 VEHICLES PER DAY)
  2. THROUGH ROADS
  3. HIGH SPEEDS (80Km/h, OPERATING SPEED LIMIT)
  4. CENTRELINE, EDGE LINEMARKING AND RRPM'S
  5. GUIDE POSTS
  6. CLEAR ZONE AS PER AUSTRROADS GUIDELINES
  7. DRAINAGE

**CITY OF CASEY**

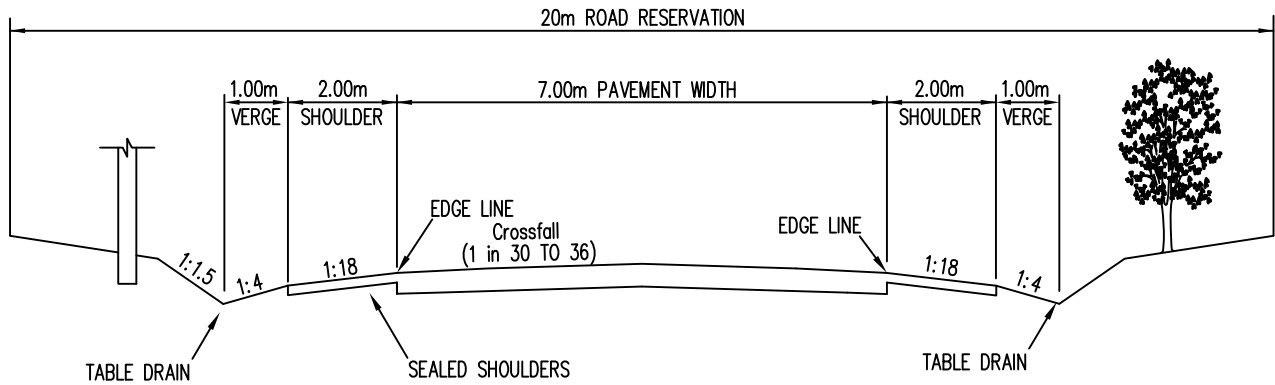
HIGH SPEED RURAL ROADS  
(COLLECTOR ROADS)  
TYPICAL GEOMETRIC CROSS SECTIONS

AMENDMENTS: GENERAL UPGRADE

MANAGER OF ENGINEERING &  
ENVIRONMENTAL SERVICES  
LAST UPDATE 09.11.2012

S-111A

V1



TYPICAL CROSS SECTION FOR HIGH SPEED RURAL ROADS  
(SECONDARY ARTERIAL)

NOTES

- TYPICAL PARAMETERS FOR HIGH SPEED RURAL ROADS
1. TRAFFIC VOLUMES (OVER 1000 VEHICLES PER DAY)
  2. THROUGH ROADS
  3. HIGH SPEEDS (100km/h, OPERATING SPEED LIMIT)
  4. CENTRELINE, EDGE LINEMARKING AND RRPM'S
  5. GUIDE POSTS
  6. CLEAR ZONE AS PER AUSTRROADS GUIDELINES
  7. DRAINAGE

**CITY OF CASEY**

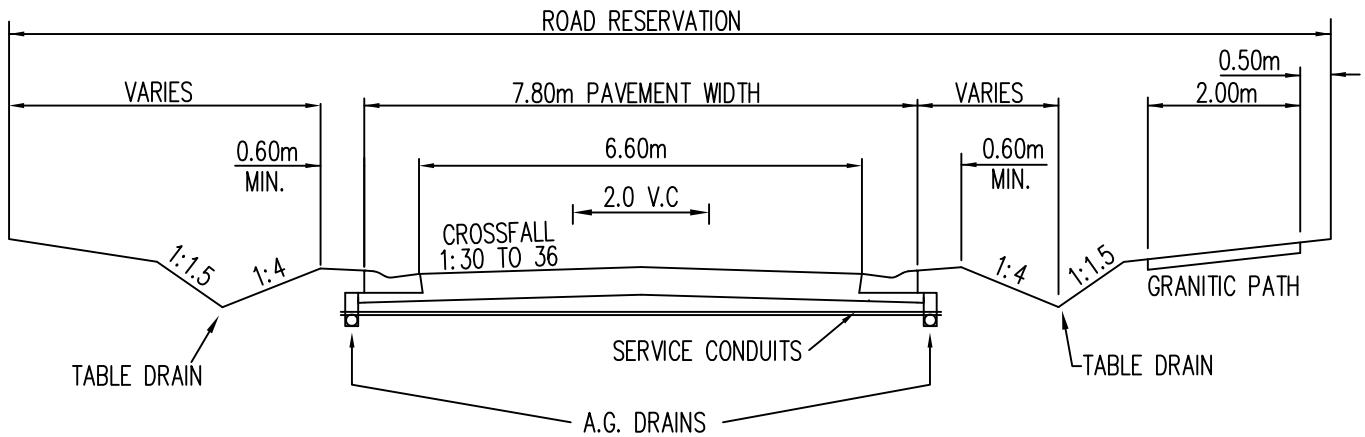
HIGH SPEED – RURAL ROADS  
(SECONDARY ARTERIAL ROADS)  
TYPICAL GEOMETRIC CROSS SECTIONS

AMENDMENTS: GENERAL UPGRADE

MANAGER OF ENGINEERING &  
ENVIRONMENTAL SERVICES  
LAST UPDATE 09.11.2012

S-111B

V1



TYPICAL CROSS SECTION FOR HIGH SPEED RURAL ROADS  
(WITH CONCRETE KERB AND CHANNEL)

NOTES

TYPICAL PARAMETERS FOR HIGH SPEED RURAL ROADS

1. TRAFFIC VOLUMES (OVER 1000 VEHICLES PER DAY)
2. THROUGH ROADS
3. HIGH SPEEDS (80km/h, OPERATING SPEED LIMIT)
4. CENTRELINE, EDGE LINEMARKING AND RRPM'S
5. GUIDE POSTS
6. CLEAR ZONE AS PER AUSTRROADS GUIDELINES
7. DRAINAGE – INCORPORATING KERB AND CHANNEL WITH ROCK BEACHED OUTLETS DISCHARGING TO TABLE DRAINS (TO VICROADS STANDARD SD 2051)

**CITY OF CASEY**

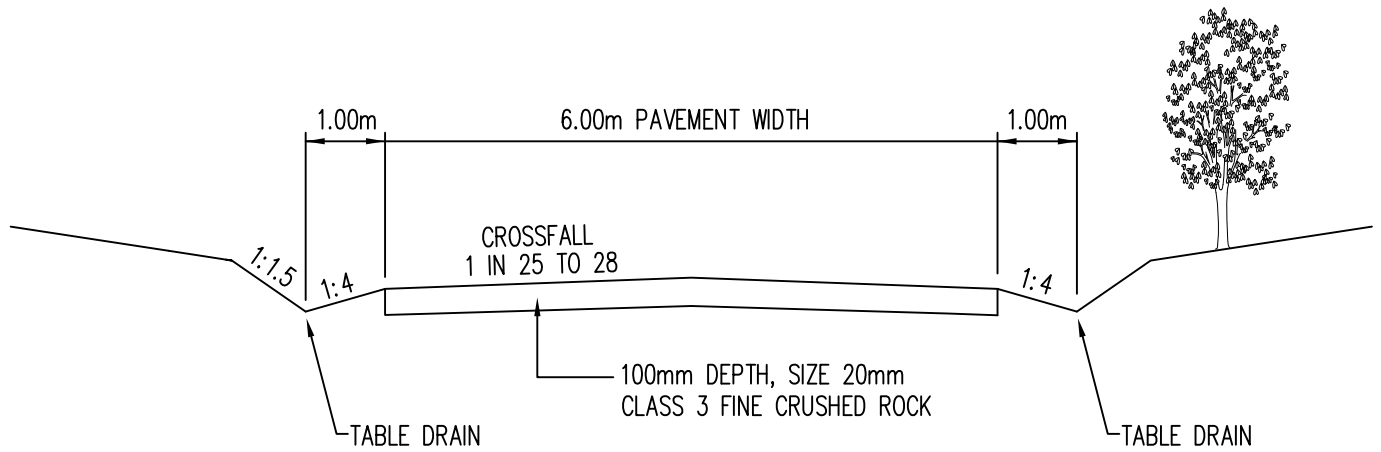
HIGH SPEED RURAL ROADS  
(WITH CONCRETE KERB AND CHANNEL)  
TYPICAL GEOMETRIC CROSS SECTIONS

MANAGER OF ENGINEERING &  
ENVIRONMENTAL SERVICES  
LAST UPDATE 09.11.2012

AMENDMENTS:

S-111C





TYPICAL CROSS SECTION FOR  
GRAVEL ACCESS ROADS  
(LOCAL ACCESS IN RURAL AREAS)

NOTES

TYPICAL PARAMETERS FOR GRAVEL ACCESS ROADS

1. LOCAL ACCESS ONLY
2. NO THROUGH ROADS
3. LOW SPEEDS (OPERATING SPEED UP TO 50 Km/h)
4. NO GUIDE POSTS
5. CLEAR ZONE AS PER AUSTRROADS GUIDELINES
6. DRAINAGE

**CITY OF CASEY**

NEW GRAVEL ACCESS ROADS  
TYPICAL GEOMETRIC CROSS SECTION

*Robert*

MANAGER OF ENGINEERING &  
ENVIRONMENTAL SERVICES

LAST UPDATE      09.11.2012

AMENDMENTS:

S-112