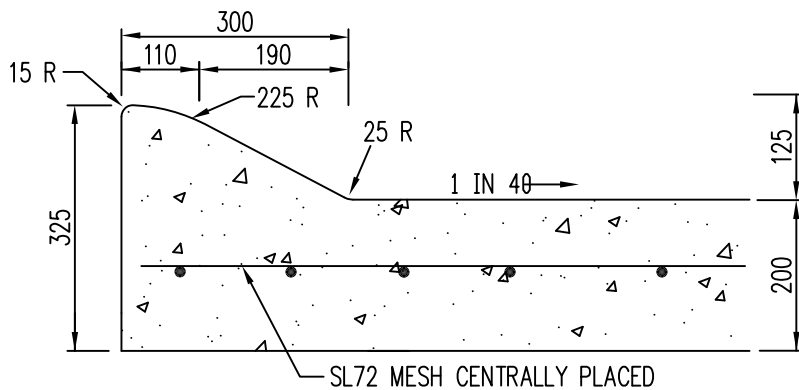


DETAIL 2



DETAIL 1

NOTES:

1. MINIMUM REINFORCING COVER 100mm.
2. CONCRETE STRENGTH OF F'C = 25 MPa
3. CONCRETE STRENGTH OF F'C = 30 MPa IF COLOURED CONCRETE IS USED

CITY OF CASEY

ROUNDABOUT CENTRAL ISLAND GENERAL

AMENDMENTS: GENERAL UPGRADE

MANAGER OF ENGINEERING &
ENVIRONMENTAL SERVICES

LAST UPDATE 09.11.2012

S-103

V2