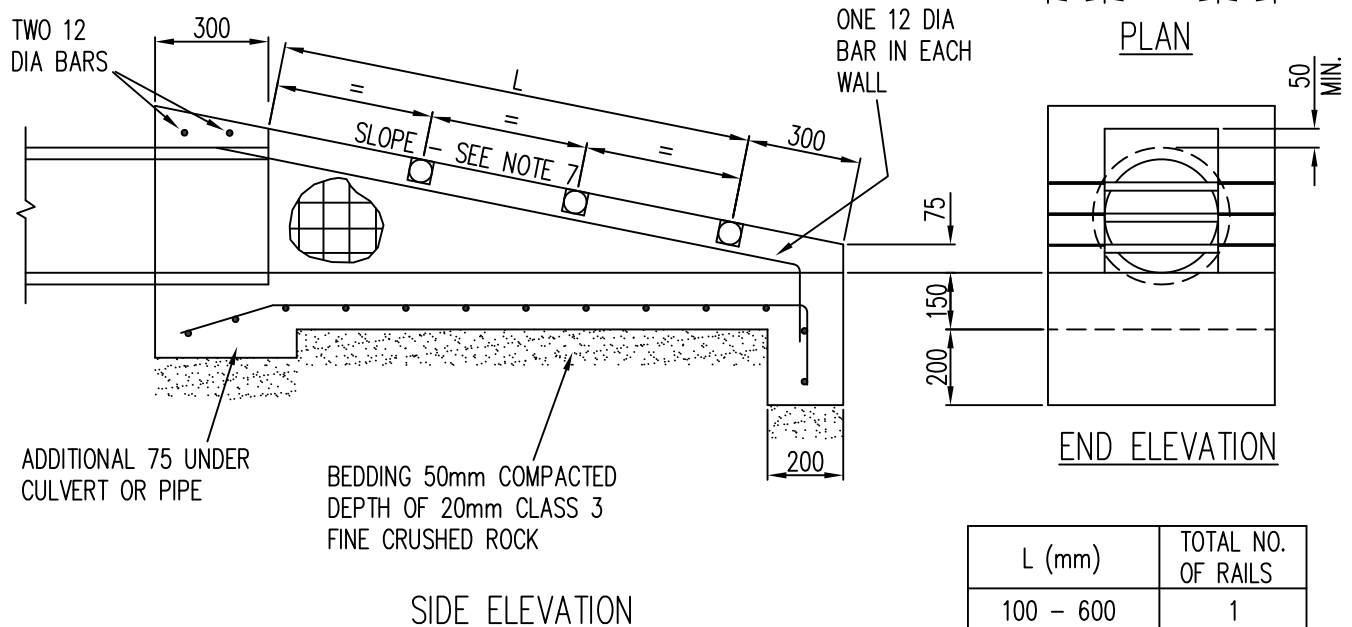


NOTES

1. REINFORCEMENT, SL81 (F81) UNLESS OTHERWISE SPECIFIED, SHALL BE CONTINUOUS AROUND CORNERS AND LOCATED AS SHOWN.
CLEAR COVER OF 50mm MIN.,
LAPS :FABRIC 300mm,
BARS 25 x BAR DIAMETER MIN.
2. DISTRIBUTION BARS 12 DIA AT 200 CENTRES
3. CONCRETE SHALL BE NORMAL – CLASS N32 STANDARD STRENGTH GRADE OR HIGHER COMPLYING WITH REQUIREMENTS OF AS 1379.
EXPOSURE CLASSIFICATIONS UP TO AND INCLUDING B1.
4. EXPOSED EDGES SHALL HAVE 20 x 20 CHAMFERS
5. RAILS WITHIN SECTION "L" SHALL BE EVENLY SPACED.
6. RAILS ARE 60.3 DIAMETER GALVANISED TUBES 5.4mm THICK. THESE ARE TO BE GROUTED INTO THE SLOTS IN THE WALLS.
7. SLOPE OF ENDWALL TO MATCH BATTER SLOPE. MAXIMUM SLOPE 1 IN 4
8. ENDWALLS SHALL BE CONSTRUCTED IN ACCORDANCE WITH THE RELEVANT PROVISIONS OF AS 3600.
9. ACCEPTABLE PRECAST DRIVEABLE ENDWALLS ARE AVAILABLE TO SUIT PIPE SIZES FROM 300mm TO 600mm FROM VICPITS PTY LTD
VIC PITS PTY LTD,
2 REEVES COURT
BREAKWATER VIC. 3219



CITY OF CASEY

VICROADS TYPE DRIVEABLE ENDWALL

AMENDMENTS:

Robert

MANAGER OF ENGINEERING &
ENVIRONMENTAL SERVICES
LAST UPDATE 09.11.2012

S-804A